

## DESIGNED FOR ANY ROOM, ANY CLIMATE

**MORE  
LIL' HELPER  
MOMENTS  
ARE MADE  
ON MOHAWK**



**Waterproof**

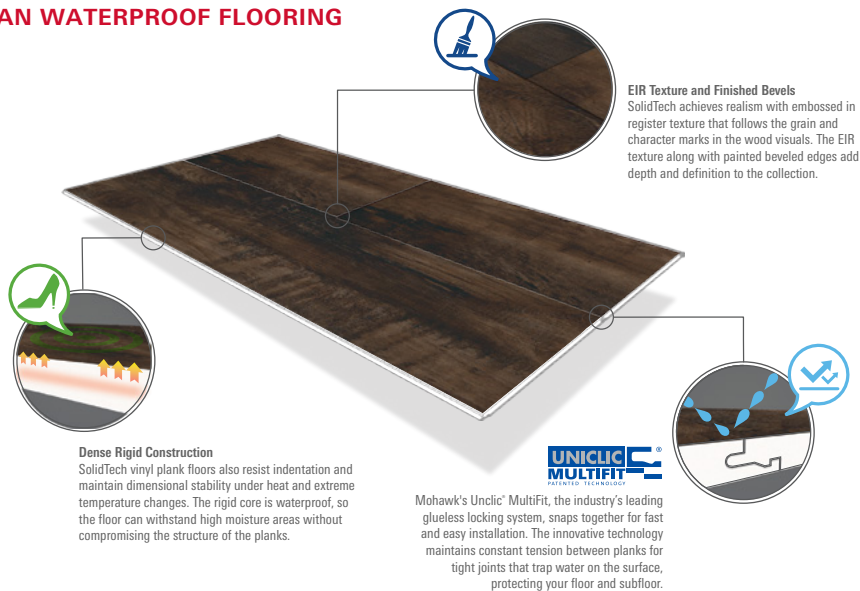


**No Gap  
Guarantee**



**All Pet Protection**

### MORE THAN WATERPROOF FLOORING



### BENEFITS

- Waterproof to withstand spills and pet accidents, SolidTech is optimal for wet areas, such as basements and bathrooms.
- Planks are 50% denser than average composite core flooring, so the floor will not telegraph any visual imperfections of the underlying surface.
- The core construction prevents cupping and gapping due to moisture or temperature changes.
- SolidTech uses the advanced Uniclic Multifit locking system for easy installation at any angle.
- Tough wear layer resists scuffs, scratches and dents.
- Realistic texture along with painted bevel edges add depth and definition
- Wider planks and extremely low pattern repetition gives SolidTech a more authentic natural hardwood visual.
- All Pet Protection and Warranty covers all pets, all accidents, all the time.

### WHAT IS SOLIDTECH?

**Lacquer Finish** for scratch and scuff resistance

**Multi-layer Inner Core** for sound insulation and dent resistance

**Foam Pad** for thermal insulation, cushioning and sound barrier

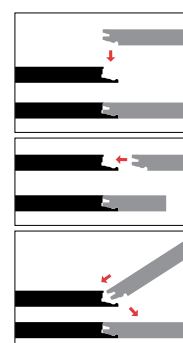
**Wear Layer** to protect against wear and add realistic texture

**HD Design Layer** for the ultimate detail, clarity and plank variation

**Multi-layer Rigid Core** constructed for superior strength and support

### UNICLIC MULTIFIT

Mohawk's Uniclic® MultiFit installs three different ways.



#1 DROP DOWN

#2 INSERT HORIZONTALLY

#3 ANGLING